



simplex
coatings

VISION

Simplex is a range of competitively priced, high-quality products for the industrial coatings markets around the world. We want to offer our clients simple but efficient solutions in a wide and stable range of colors, using more than 25 years of experience in providing innovative solutions on the international car refinish market.



MIXING/TINTING SYSTEM

20

highly concentrated pigments based on **ACRYLIC** resin (high UV resistance)



OUR OWN

dedicated software
(cloud version to come)

Spectrophotometer

(correction available)



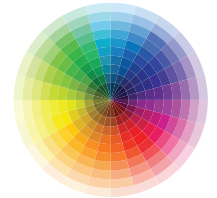
40.000

color shades



AUTOMATIC

mixing machines
available





BINDERS

- Polyurethane-Polyester > High quality, 2K **fast drying topcoat** in gloss and semi-matt
- Acrylic > **High quality topcoat** in gloss and semi-matt
- PUR anti-corrosive DTM > **High gloss anti-corrosive** 2K DTM (>80% gloss)
- HS PUR anti-corrosive DTM > **UHS, multi-purpose**, high thickness, semi-gloss DTM
- Alkyd 1K > Very good quality topcoat in gloss and semi-matt

PRIMERS

Alkyd 1K primer

➤ **multi-purpose** 1K alkyd **primer**

Epoxy fast drying

➤ high quality, fast drying, with **perfect surface without sanding**

Epoxy 2K shop primer

➤ **fast drying** for any kind of metal

Poly-vinyl 1K shop primer

➤ which **can be welded**, also **for temporary protection**, can be repainted with almost all kinds of products (1K and 2K)

Transparent Acrylic Multi-Sealer

➤ **insulating wet on wet primer**, has direct adhesion to 1K and 2K painted surfaces, also **for repainting powder coatings** surfaces without sanding

TARGET MARKETS



Agricultural,
Construction
& Earthmoving
(ACE)



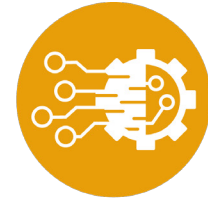
Buses
& Truck
Cabins



Commercial
Vehicles
& Cranes



Fork-lift
& Handling
Equipment



Machinery
& Technical
Equipment

VISUAL SIMPLICITY

PIGMENTS

PAINTS & BINDERS

PRIMERS

PUTTIES

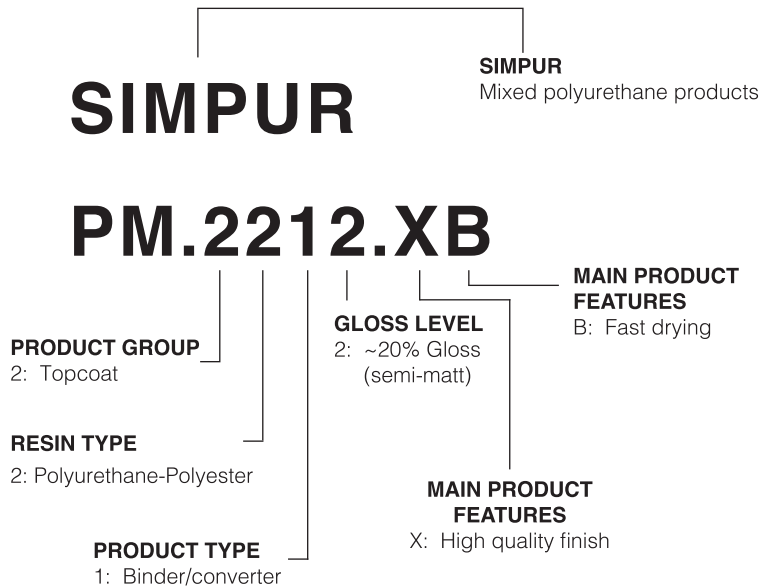
HARDENERS

THINNERS

ADDITIVES




NAMING SIMPLICITY





SIMPLICITY OF SOLUTIONS

- 1.** Proportion of binder and pigments – 75/25 in volume, e.g. 20L of color, for 15L of binder/converter. **Volume of pigmentation adjustment included in the software**
- 2.** Hand, semi-automatic or automatic mixing machines
- 3.** Possibility of mixing the same group of products to achieve all kinds of gloss level
- 4.** **Training** for distributors and end customers – for painters, technicians but also managers
- 5.** **Free consultancy** in the field of industrial painting facility, cabins, equipment, solutions, processes



SIMPOX PM.1422.RE
fast dry epoxy primer

**REPAINTABLE EVEN
AFTER 15 MINUTES**

**GREAT ANTI-CORROSIVE
RESISTANCE**

**SANDABLE JUST
AFTER 180 MINUTES**

**EXCELLENT ADHESION
EVEN ON NON-BLASTED
SURFACES**

**EXCELLENT
SMOOTHNESS
IN THE WET ON WET
SYSTEM**

**200 MICRONS
IN ONE COAT**



PERFORMANCE AND EFFICIENCY

SIMPUR PM.2219.XB || SIMCRYL PM.2119.XU

high quality PUR || high quality acrylic

EXCELLENT FINISH
(AIRSPRAY & AIRMIX)

HIGH PHYSICAL
& CHEMICAL RESISTANCE

HIGH UV RESISTANCE
(ABOVE AVERAGE)

EXCELLENT PAINTING
PROCESS EFFICIENCY

C4-H RESISTANCE
(ISO 12944)

HIGH AND STABLE GLOSS
AND COLORISTICS

simplex



www.simplex-coatings.pl

Multichem Sp. z o.o.
62-030 Luboń
ul. Przemysłowa 2

info@multichem.pl
www.multichem.pl
tel.: 61 893 37 31